

Heizungsregler Landis & Gyr
Serie RVL 41 / 45 / 46



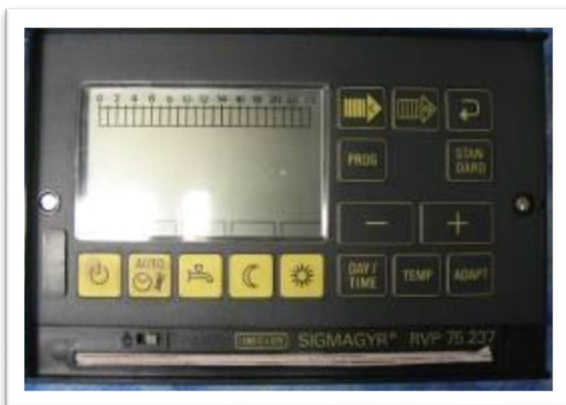
Heizungsregler Landis & Gyr Serie RVP
„Anlog“ 21 / 30 / 31 / 32



Heizungsregler RVL 47 bis 480



Heizungsregler RVP200 usw.



Heizungsregler Landis & Gyr
Serie RVP 20/40 / 45 / 54 / 55 / 75 / 76 / 97



Heizungsregler Landis & Gyr RVP
4.1/51.



Heizungsregler Siemens/Albatros Serie RVA 46. / 53. / 63. / 66.



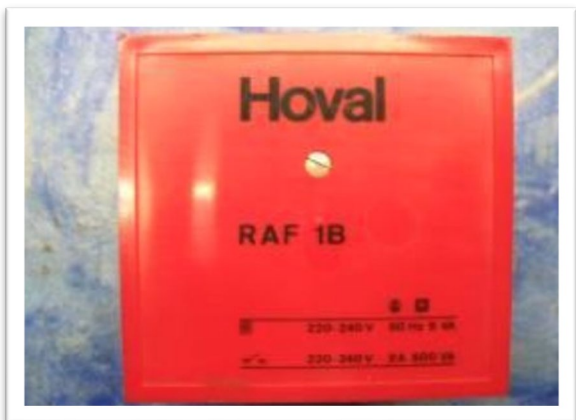
Top Tronic 223B / 23B / usw.



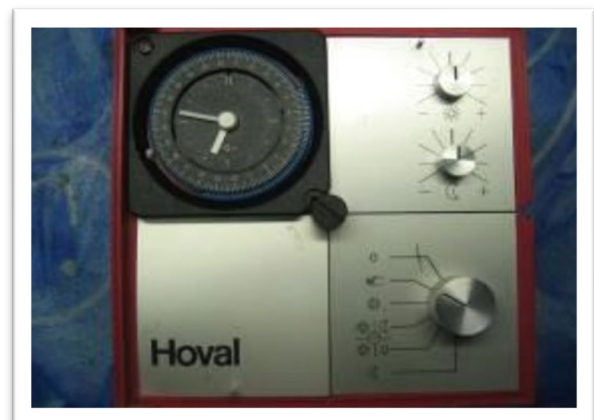
Stiebel Eltron HRGW 2U



Hoval Thermesta T2B / T5B/ T6B / T8B



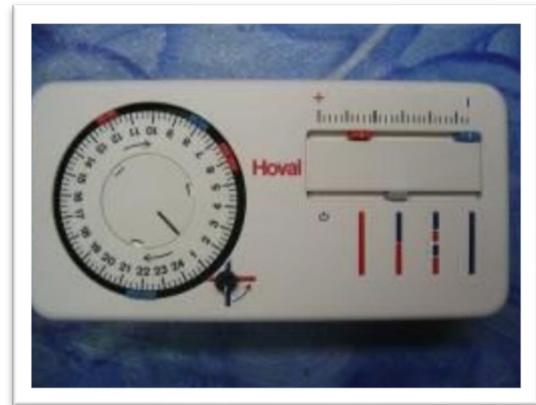
Hoval RAF 1B



Hoval RTK 3B/ RKS 3B



Hoval Thermosta T9B



Hoval EG86A EG 86B



Hoval Futuresta



Hoval Ecotesta



Klöckner KL- WKBM/ WKB/ WZB



Cuenod/Klöckner LOGON PLUS



SCS RH 2000/2002



Alpha R23/ 233



Alpha R23/ 233



ELESTA Domesta



ELESTA Domesta



ELESTA Domesta



Sauter equitherm 100/200 usw.



Elfantherm AEG E22



TEM IT 5710/11



TEM 21/ 29/ 31/ 35



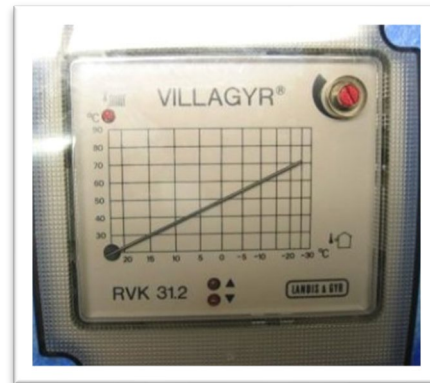
Alpha 23B



EVb/ Theta/ Top Tronic T



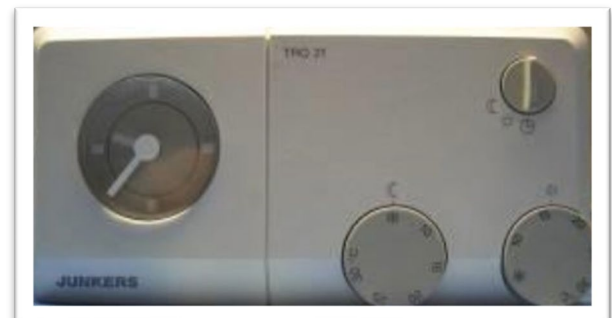
Frensch AS 5184



RVK 31.2 (Villagyr)



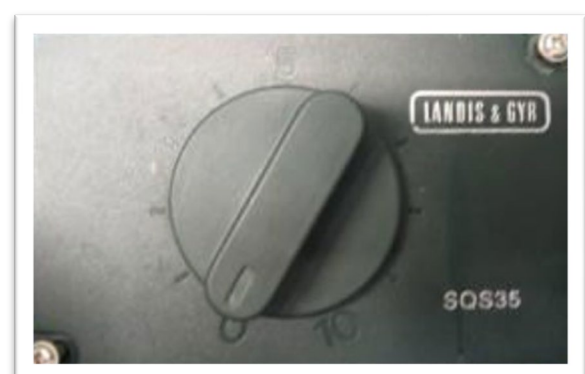
Raumgerät DWS chronostat 4E



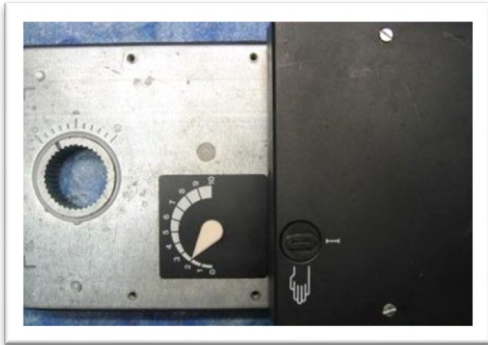
Raumgerät Junkers TRQ21



Mischerantrieb SQA 31



Mischerantrieb SQS 35



Mischerantrieb ELCO M220



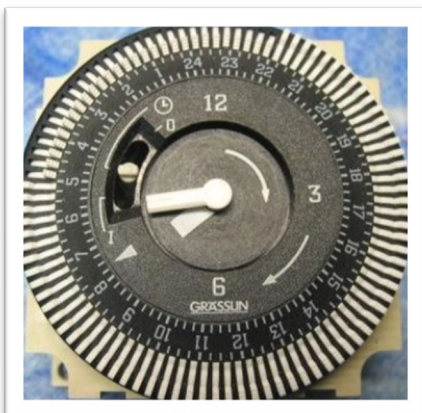
Programmiergerät AZW 75



Schaltuhr AUZ 1.4



Schaltuhr AUD 1.2



Schaltuhr AUZ 3.1



Alle Grässlin Schaltuhren



Schaltuhr Maxi Rex



Schaltuhr Teben



Schaltuhr RAM 388



ELESTA Climesta 6B usw.



Buderus M004



Div. Polygyr Ersatzteile



Div. Polygyr Ersatzteile



Div. Polygyr Ersatzteile